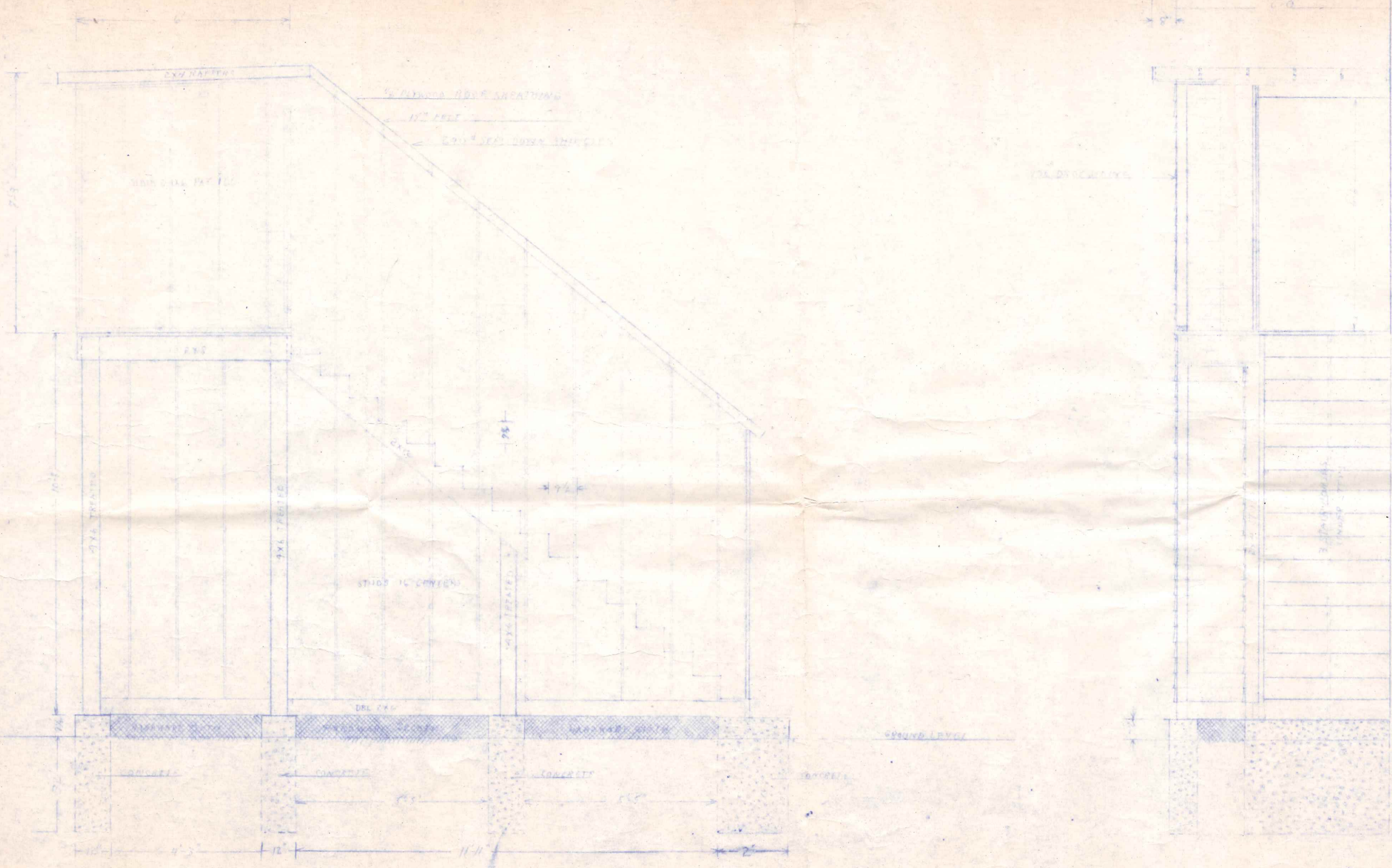


825 Monroe

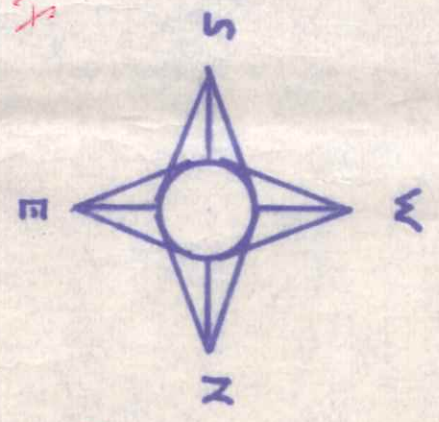
OUTSIDE STAIRWAY
1st F. RENTALS
MONROE STREET



FRONT VIEW
1/2" = 1'-0"

Handwritten notes and signatures at the bottom right corner of the page.

- ⊙ - EX. FAN LIGHT
- ⊙ - CEILING LIGHT
- S - SWITCH
- ⊕ - THERMOSTAT
- ⊕ - DUPLEX RECP.
- ⊕ - RANGE RECP.
- BB. HTR. OF WALL HTR.



Closest lights 18" min clearance from shelf
Art. 410-8 NEC

Note! If there is no access at least 18" X 24" to underneath this area, then provide one outside.

Note! Hot water tank in basement.

Provide heat or install a BACK PORCH door here

New meter service. 100AMP

2 1/2" min. clear space in front of water closet.
Sec. R-208
1243 bldg code bk. 71'

Fire Hazard Classification According to Sec 902.0 a Table 16 of Bldg. Code bk. 70' Class L-2 requiring 1/2 hr. fire rating.

This entire wall from floor to ceiling requires the following:
- Stud wall 1 1/2" on Flat
- Apply First 1/2" reg. gyp sum
- will board with 3/16 min cement- asbestos sheet over gyp sum
- will board.
- In opening for unused stairs enclose with 2x4 studs 16" oc with application of the above on both sides.
Info on Craft Form: E. R. R. of American Insure Assoc. and 1939.

Ceiling to be drop-ceiling with 8'-0" finish height and 1/2 hrs. fire rating!

Re-arrange recps by kitchen counter for Art. 210 NEC.

Provide light fixture of front entrance required by NEC.

Scale 1/8" = 1'-0"

825 MONROE

